

SITE LEGEND

	PROPERTY LINE
	RIGHT-OF-WAY LINE
	SETBACK LINE
	EASEMENT LINE
	ACCESSIBLE ROUTE
	LIGHT POLE
	FIRE HYDRANT
	STREET SIGNAGE

SITE MATERIAL

	LANDSCAPE AREA
	CONCRETE PAVING
	ASPHALT PAVING
	FIRE LANE ROUTE
	DECOMPOSED GRANITE (DG)

SCOPE OF WORK

SITE IMPROVEMENTS TO EXISTING ELEMENTARY SCHOOL CAMPUS TO MODIFY FIRE LANE AND ADD BUS DROP OFF AREA. REFINEMENT OF EXISTING PARKING LOTS.

PROJECT DATA

PROJECT INFORMATION:

TUMBLEWEED ELEMENTARY SCHOOL
4001 W LAUREL LN
PHOENIX, AZ 85029

OWNER:

WASHINGTON ELEMENTARY SCHOOL DISTRICT
4650 W. SWEETWATER AVENUE
GLENDALE, AZ 85304

PARCEL NUMBER:

149-33-001J

ZONING:

SF RESIDENTIAL

FLOOD ZONE:

N/A

SITE AREA:

516,709 S.F. (11.86 ACRES)

CODES AND STANDARDS

2018 INTERNATIONAL BUILDING CODE
2018 INTERNATIONAL PLUMBING CODE
2018 INTERNATIONAL MECHANICAL CODE
2018 INTERNATIONAL FUEL GAS CODE
2017 NATIONAL ELECTRIC CODE
2017 ICC/ANSI A117.1 WITH 2010 ADA STANDARDS AS ADOPTED BY THE STATE OF ARIZONA (MOST RESTRICTIVE GOVERNS)
2018 INTERNATIONAL FIRE CODE AS ADOPTED BY ARIZONA STATE FIRE MARSHAL

OTHER STATUTES, ORDINANCES, LAW, REGULATIONS, RULES, ORDERS AND CODE SPECIFIED IN OTHER SECTIONS OF THE SPECIFICATIONS OR BEARING ON THE WORK INCLUDING REGISTRATION OF OCCUPATIONAL SAFETY AND HEALTH ADMINISTRATION UNLESS SUPERSEDED BY STATE STATUTE OR LAW

*WITH CITY OF PHOENIX AMENDMENTS

NOTE:

STATE FUNDED PUBLIC SCHOOLS AND PUBLIC CHARTER SCHOOLS ARE EXEMPT FROM LOCAL ZONING ORDINANCE STANDARDS, INCLUDING SITE PLAN REVIEW, PER ARIZONA STATE LAW, ARS-15-189.01

SITE GENERAL NOTES

- USE OF THIS SITE WILL CONFORM WITH ALL APPLICABLE BUILDING CODES.
- ALL NEW OR RELOCATED UTILITIES WILL BE PLACED UNDERGROUND.
- ALL ON-SITE ACCESSIBLE SIDEWALKS SHALL BE A MINIMUM OF 3 FEET 0 INCHES WIDE AND HAVE A MAXIMUM SLOPE OF 1:20 WITH THE MAXIMUM CROSS SLOPE OF 1:50. ALL CURBS MUST PROVIDE ACCESSIBLE RAMPS PURSUANT TO THE AMERICANS WITH DISABILITIES ACT (ADA) STANDARDS.
- SEE SHEET SP110 & SP111 FOR GENERAL SITE DETAILS.

KEY NOTES

- 1.14 EXISTING ORNAMENTAL STEEL GATE AND PORTION OF FENCE TO REMAIN.
- 1.15 PORTION OF ORNAMENTAL STEEL FENCE TO REMAIN. REPAIR AND REPAINT AS REQUIRED.
- 2.01 EXISTING FIRE LANE GATE TO REMAIN.
- 2.02 EXISTING ACCESSIBLE RAMP TO REMAIN.
- 2.03 EXISTING EXTERIOR SHED TO REMAIN.
- 2.04 EXISTING FIRE HYDRANTS TO REMAIN.
- 2.05 EXISTING ASPHALT TO REMAIN.
- 2.06 EXISTING PAINTED FIRE LANE CURBS, CLEAN, PREP, AND REPAINT.
- 2.07 EXISTING FIRE LANE SIGNAGE TO REMAIN.
- 2.08 EXISTING PEDESTRIAN GATE TO REMAIN.
- 2.11 EXISTING STANDPIPE LOCATION.
- 3.01 ADD ALTERNATE - NEW CONCRETE SIDEWALK. REFER TO CIVIL DRAWINGS. (ADD ALTERNATE #1)
- 10.01 INSTALL SALVAGED LEFT TURN RESTRICTION SIGN.
- 10.02 INSTALL ACCESSIBLE PARKING SIGN & STRIPING PER CITY OF PHOENIX & ACCESSIBILITY REQUIREMENTS. SEE DETAILS 1/SP111, 2/SP111, AND 13/SP111.
- 10.03 INSTALL 'ENTRY ONLY' SIGN(S). SEE DETAIL 7/SP111.
- 10.04 INSTALL 'WRONG WAY-DO NOT ENTER' SIGN(S). SEE DETAIL 5/SP111.
- 10.05 INSTALL 'EXIT ONLY-DO NOT ENTER' SIGN(S). SEE DETAIL 6/SP111.
- 32.01 NEW FIRE LANE GATE. SEE DETAIL 6/SP110.
- 32.02 NEW 6'-0" CHAIN-LINK FENCE. SEE DETAIL 4/SP110.
- 32.03 NEW PAINTED FIRE LANE CURB. SEE DETAIL 19/SP110.
- 32.04 NEW FIRE LANE SIGNS. SEE DETAIL 16/SP110.
- 32.05 NEW STOP SIGN. SEE DETAIL 8/SP111.
- 32.07 ADD ALTERNATE - SLURRY SEAL THE REMAINING, EXISTING FIRE LANE. REFER TO CIVIL DRAWINGS. (ADD ALTERNATE #2)
- 32.08 NEW 4'-0" CHAIN-LINK FENCE. SEE DETAIL 12/SP111.
- 33.01 INSTALL DRAINAGE PIPE. REFER TO CIVIL DRAWINGS.

TUMBLEWEED ELEMENTARY SCHOOL
WASHINGTON ELEMENTARY SCHOOL DISTRICT
4001 W LAUREL LN
PHOENIX, AZ 85029

NEW SITE PLAN

THIS DRAWING IS AN INSTRUMENT OF SERVICE & IS THE PROPERTY OF SPS+ARCHITECTS LLP & MAY NOT BE REPRODUCED OR REPRODUCTIONS HEREOF USED WITHOUT WRITTEN PERMISSION.

REVISIONS		
MARK	DATE	DESCRIPTION

REVIEWED BY: BH
DRAWN BY: JB

PRELIMINARY
NOT FOR
CONSTRUCTION

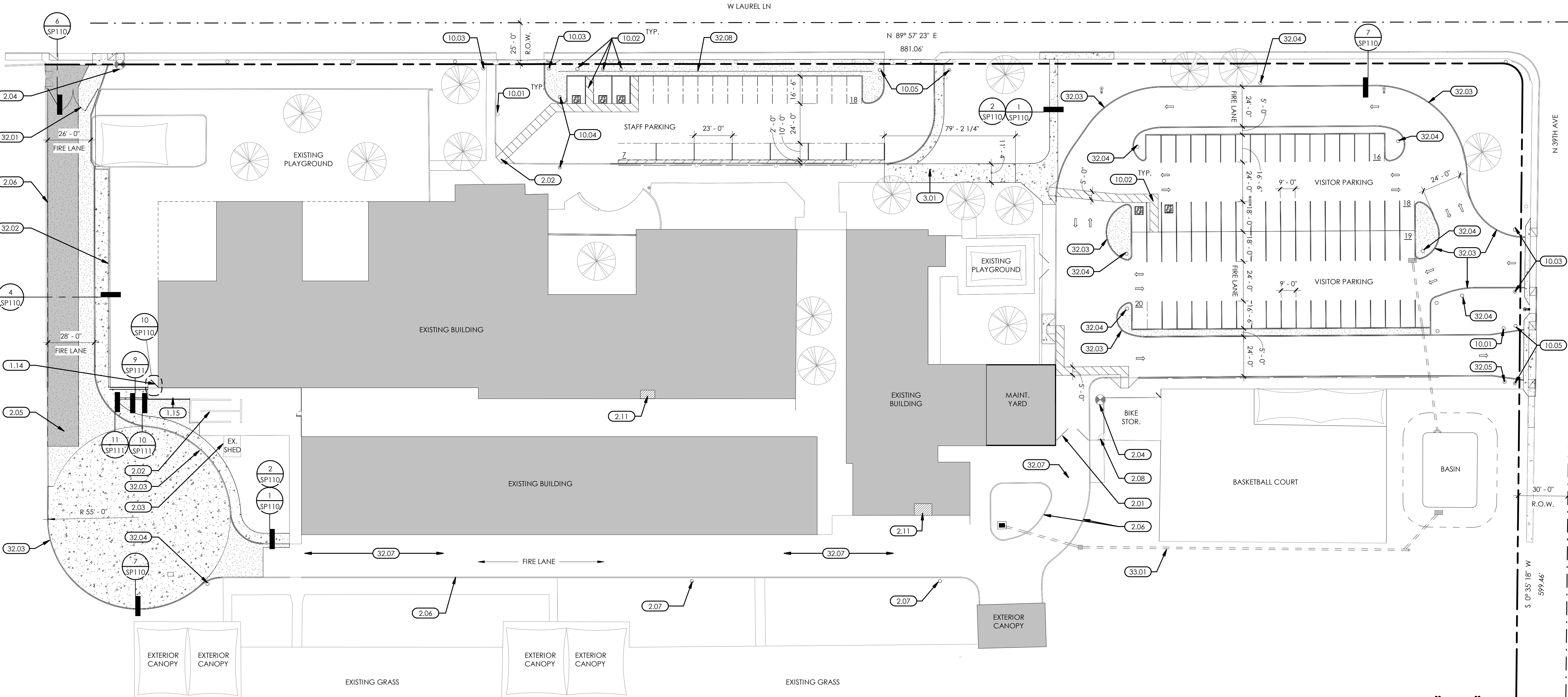
CONSTRUCTION SET

ORIGINAL ISSUE
DATE: 04-04-2025

JOB No: K2500001

SHEET:

SP101



NEW SITE PLAN

1/32" = 1'-0"

0 16' 32' 64'
1/32" = 1'-0"

